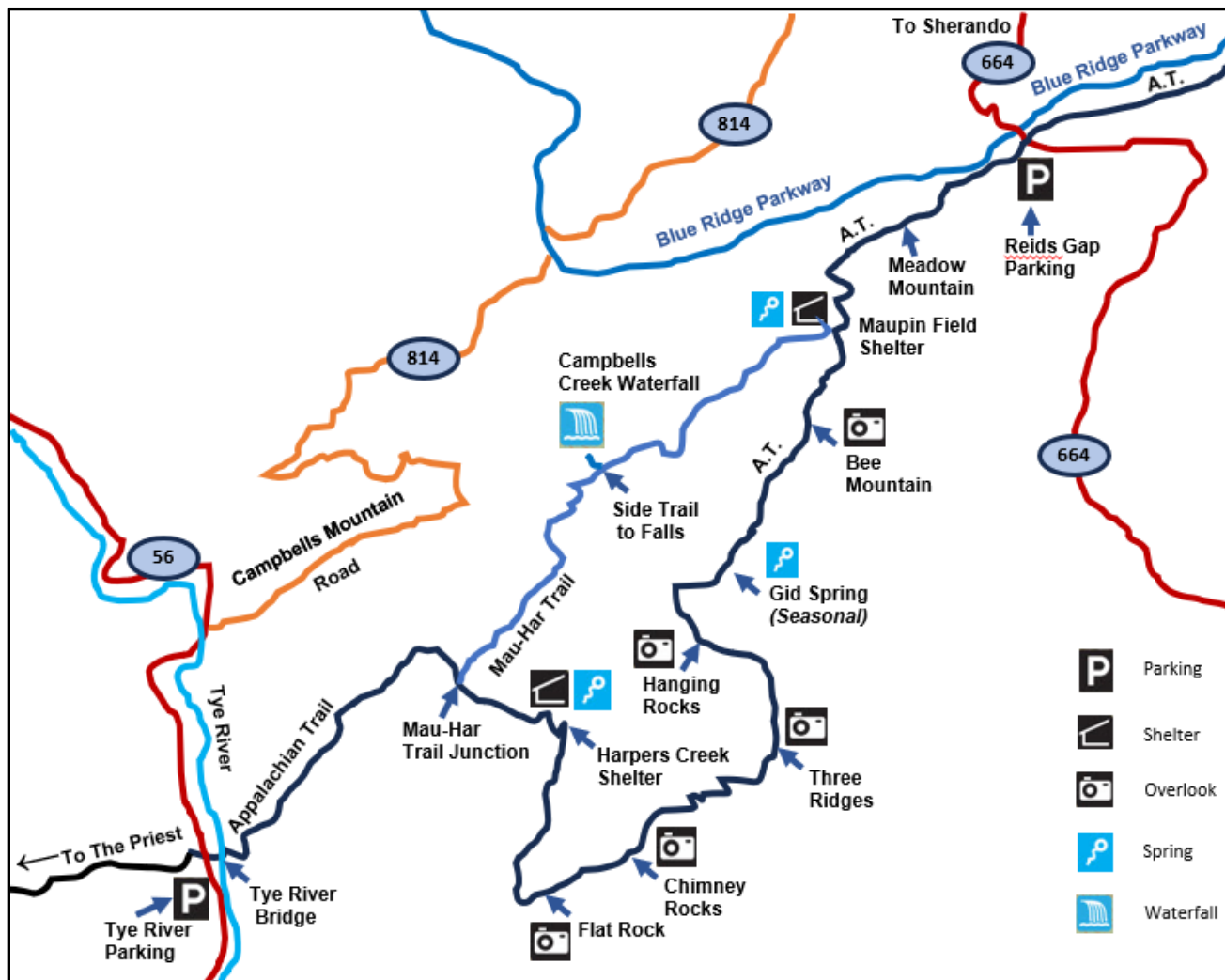


TATC's A.T. SECTION – SKETCH MAP

Not a hiking map – for reference only



Distance Table - Northbound - Tye River to Reids Gap

From - To	Mile(s)
Tye River to Mar-Har Trail Junction	1.9
Mau-Har Trail Junction to Harpers Creek Shelter	0.9
Harpers Creek Shelter to Flat Rock Overlook	1.6
Flat Rock Overlook to Chimney Rocks	0.4
Chimney Rocks to Top of Three Ridges	1.7
Top of Three Ridges to Hanging Rock Overlook	0.5
Hanging Rock Overlook to Maupin Field Shelter	2.0
Maupin Field Shelter to Meadow Mountain	0.9
Meadow Mountain to Reids Gap	0.8
Total	10.7

Distance Table - Southbound - Reids Gap to Tye River

From - To	Mile(s)
Reids Gap to Meadow Mountain	0.8
Meadow Mountain to Maupin Field Shelter	0.9
Maupin Field Shelter to Hanging Rock Overlook	2.0
Hanging Rock Overlook to Top of Three Ridges	0.5
Top of Three Ridges to Chimney Rocks	1.7
Chimney Rocks to Flat Rock Overlook	0.4
Flat Rock Overlook to Harpers Creek Shelter	1.6
Harpers Creek Shelter to Mau-Har Trail Junction	0.9
Mau-Har Trail Junction to Tye River	1.9
Total	10.7

Notes:

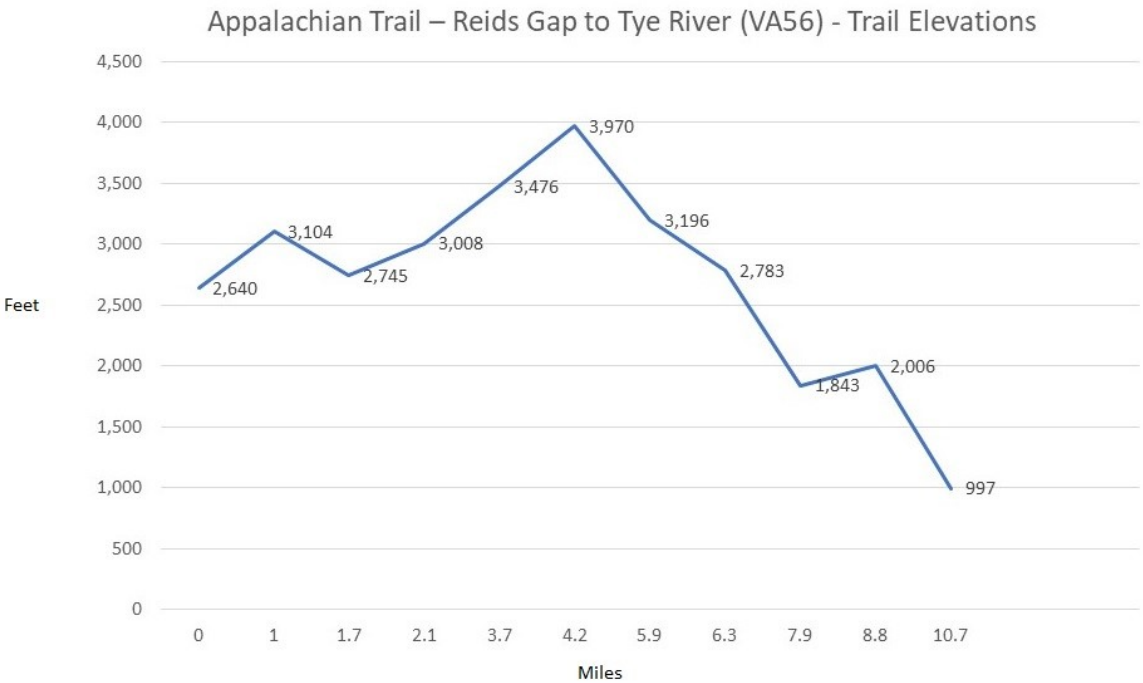
- (1) The north entrance to Mau-Har Trail is left of the Maupin Fields Shelter
- (2) At the Trail Sign on top of Three Ridges, walk 200 feet to the East on herd path to the Overlook on top of the rocks
- (3) The side trail to Campbells Creek Waterfall is less than 0.1 mile and blazed yellow
- (4) A digital map of Northern Virginia & West Virginia for the Farout App, which include this section of the trail, can be purchased from <https://app.faroutguides.com/guides/Northern%20Virginia%20%26%20West%20Virginia>
- (5) For a hard copy map of this trail section, buy PATC Map 12 - Rockfish Gap to the Tye River, 12th Edition, Link: <https://potomactrailclub.app.neoncrm.com/np/clients/potomactrailclub/product.jsp?product=219&catalogId=2&>

Elevation Profiles for Appalachian Trail and Mau-Har Trail

- 1. Reids Gap to the Tye River (VA56) on the Appalachian Trail - North to South
- 2. Three Ridges Loop via Appalachian Trail and the Mau-Har Trail
- 3. Rockfish Gap to The Priest Shelter on the Appalachian Trail - North to South
- 4. The Priest Shelter to Rockfish Gap on the Appalachian Trail - South to North

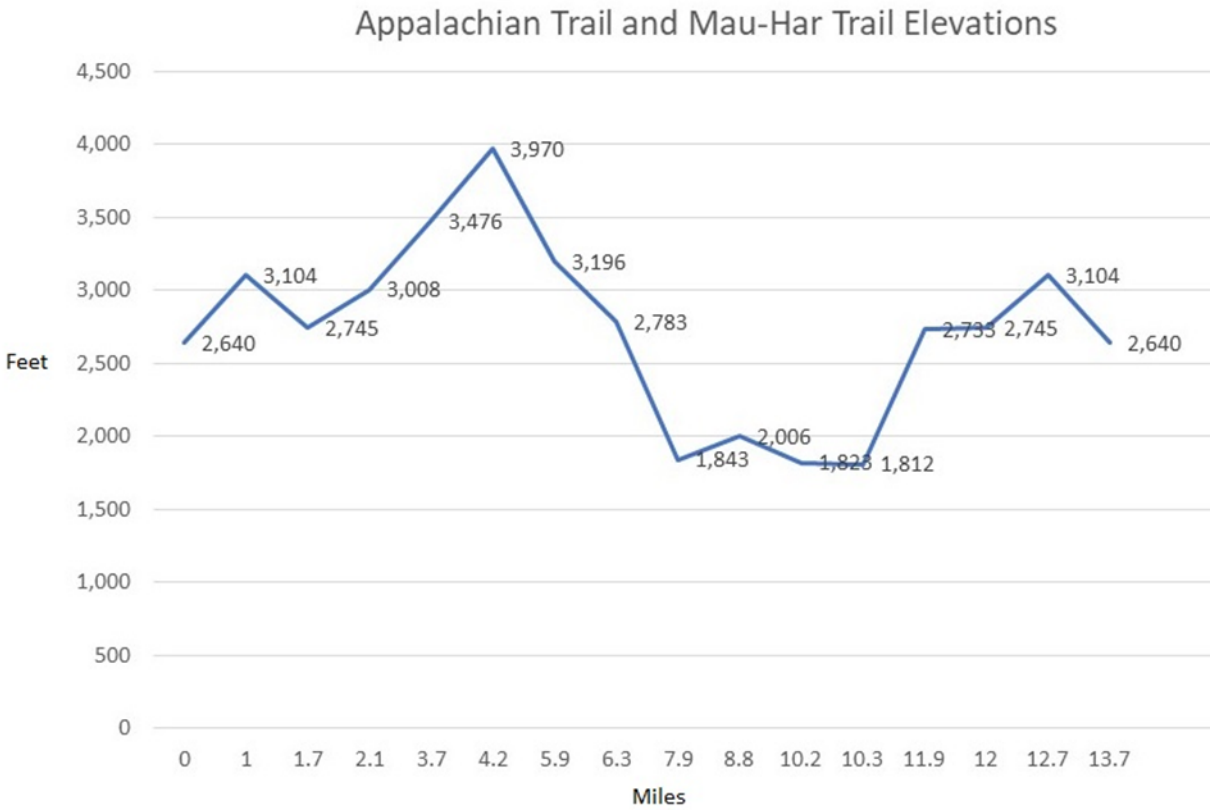
1. Reids Gap to the Tye River (VA56) on the Appalachian Trail - North to South

Reids Gap - VA664 (2,640')	0	2,640
Meadow Mountain	1	3,104
Maupin Field Shelter	1.7	2,745
Bee Mountain	2.1	3,008
Hanging Rock Overlook	3.7	3,476
Three Ridges Mountain (3,970')	4.2	3,970
Chimney Rock	5.9	3,196
Flat Rock Overlook	6.3	2,783
Harpers Creek Shelter	7.9	1,843
Mar-Har Trail	8.8	2,006
VA56 (997')	10.7	997



2. Three Ridges Loop via Appalachian Trail and the Mau-Har Trail

Waypoint	Mileage	Elevation
Reids Gap - VA664	0	2,640
Meadow Mountain	1	3,104
Side Trail to Maupin Field Shelter	1.7	2,745
Bee Mountain	2.1	3,008
Hanging Rock Overlook	3.7	3,476
Three Ridges Mountain	4.2	3,970
Chimney Rock	5.9	3,196
Flat Rock Overlook	6.3	2,783
Harpers Creek Shelter	7.9	1,843
Mar-Har Trail Junction	8.8	2,006
Side Trail to Campbells Creek	10.2	1,823
Campbells Creek Campsite	10.3	1,812
Maupin Field Shelter	11.9	2,733
Junction with A.T.	12	2,745
Meadow Mountain	12.7	3,104
Reids Gap - VA664	13.7	2,640



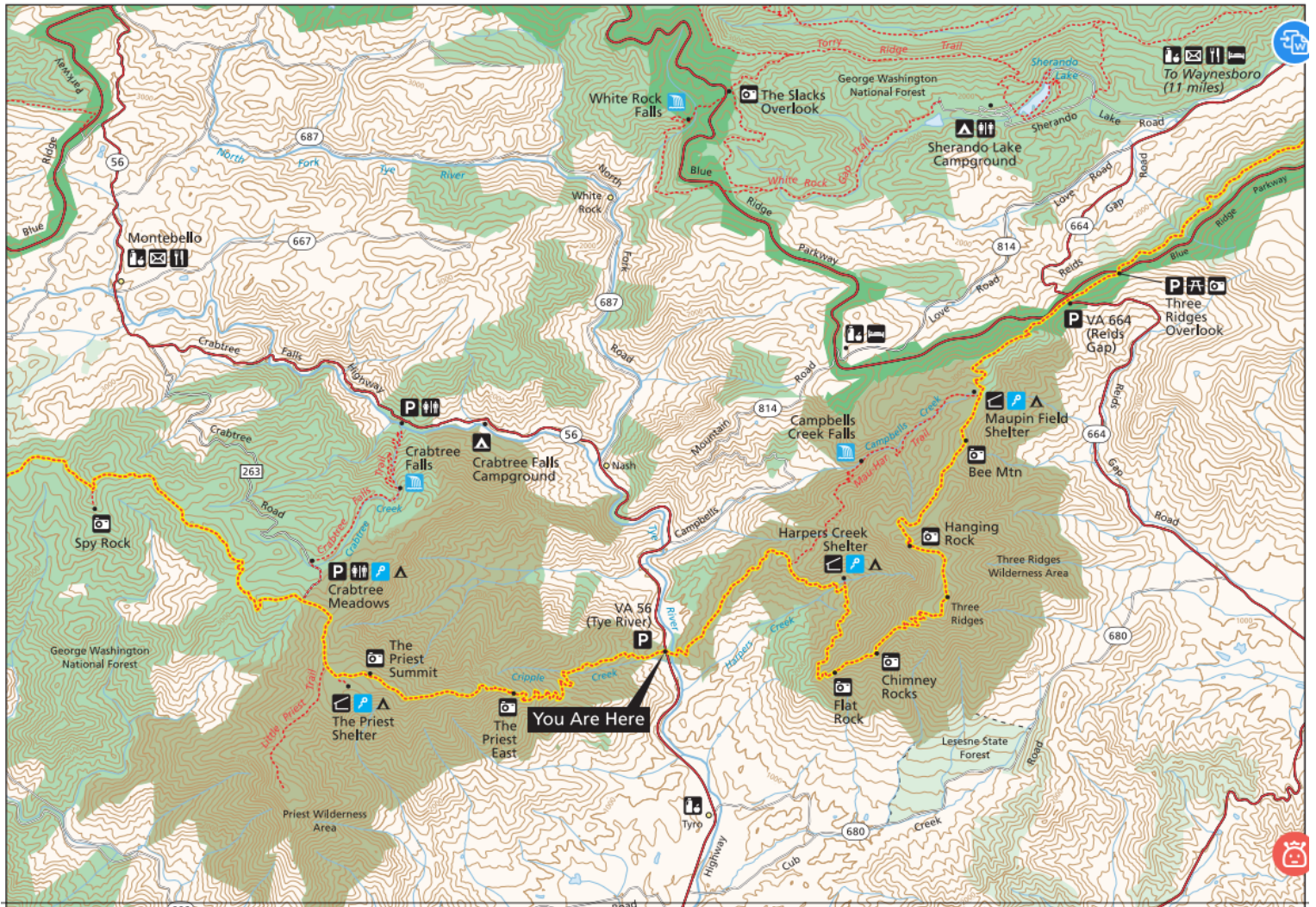
3. Rockfish Gap to The Priest Shelter on the Appalachian Trail - North to South

Waypoint	Mileage
Rockfish Gap – US250 (1,902')	0.0
Paul Wolf Shelter - Mill Creek	4.8
Jack Albright Trail	6.1
Side Trail to Glass Hollow Overlook	6.5
Side Trail to Humpback Rock Visitor Center	7.4
Bear Spring	9.7
Side Trail to Humpback Rocks	10.3
Humpback Mountain (3,606')	11.5
Dripping Rock Parking Area	14.3
Cedar Cliffs	14.8
Three Ridges Overlook	18.6
Reids Gap - VA664 (2,640')	19.1
Meadow Mountain	20.1
Maupin Field Shelter	20.8
Bee Mountain	21.2
Hanging Rock Overlook	22.8
Three Ridges Mountain (3,970')	23.3
Chimney Rock	25.0
Flat Rock Overlook	25.4
Harpers Creek Shelter	27.0
Mar-Har Trail	27.9
Tye River	29.7
VA56 (997')	29.8
Cripple Creek	31.1
The Priest (4,063)	34.1
The Priest Shelter	34.6

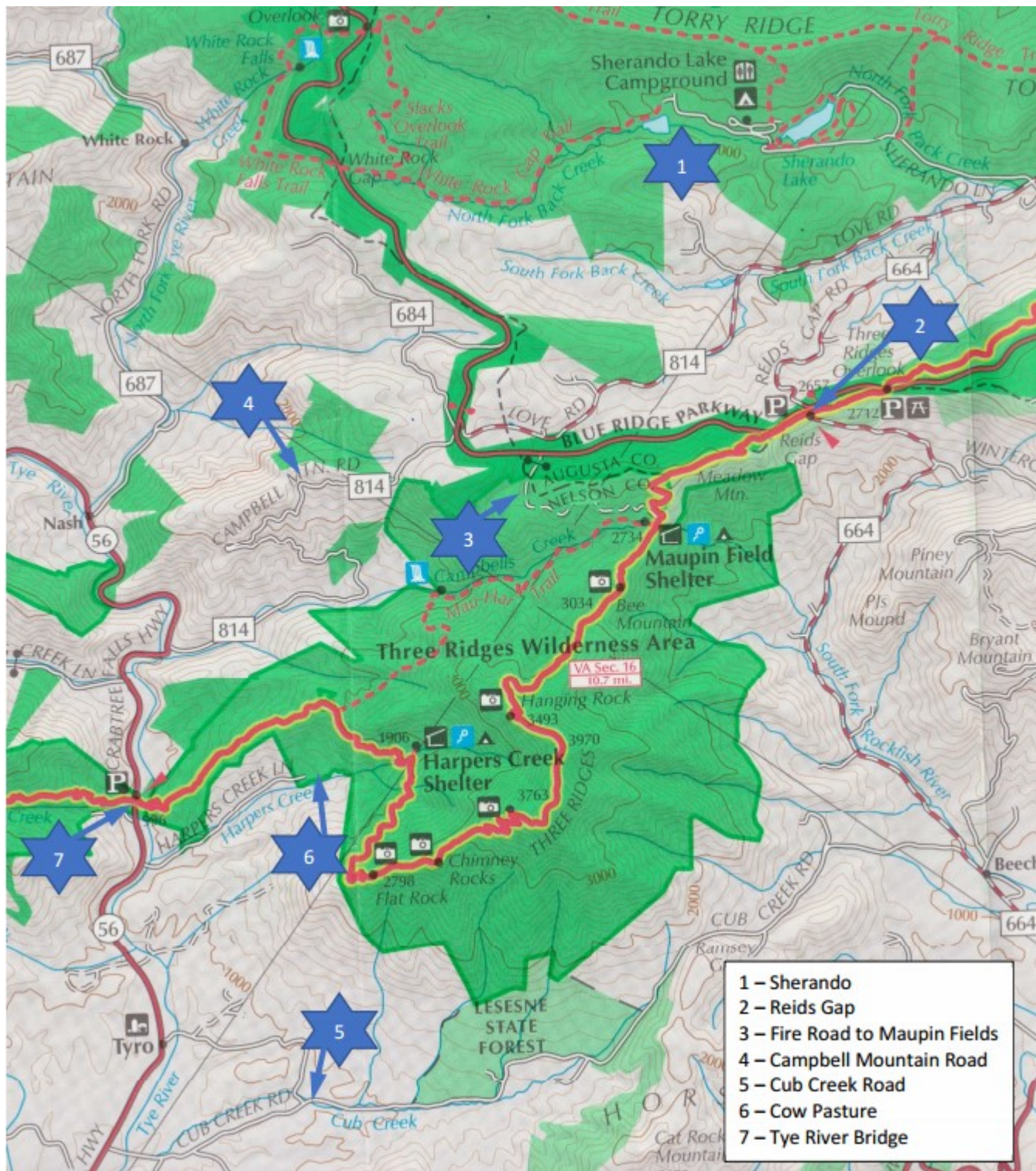
4. The Priest Shelter to Rockfish Gap on the Appalachian Trail - South to North

Waypoint	Mileage
The Priest Shelter	0
The Priest (4,063)	0.5
Cripple Creek	3.5
VA56 (997')	4.8
Tye River	4.9
Mar-Har Trail	6.7
Harpers Creek Shelter	7.6
Flat Rock Overlook	9.2
Chimney Rock	9.6
Three Ridges Mountain (3,970')	11.3
Hanging Rock Overlook	11.8
Bee Mountain	13.4
Maupin Field Shelter	13.8
Meadow Mountain	14.5
Reids Gap - VA664 (2,640')	15.5
Three Ridges Overlook	16
Cedar Cliffs	19.8
Dripping Rock Parking Area	20.3
Humpback Mountain (3,606')	23.1
Side Trail to Humpback Rocks	24.3
Bear Spring	24.9
Side Trail to Humpback Rock Visitor Center	27.2
Side Trail to Glass Hollow Overlook	28.1
Jack Albright Trail	28.5
Paul Wolf Shelter - Mill Creek	29.8
Rockfish Gap – US250 (1,902')	34.6

The Priest Wilderness and Three Ridges Wilderness Map



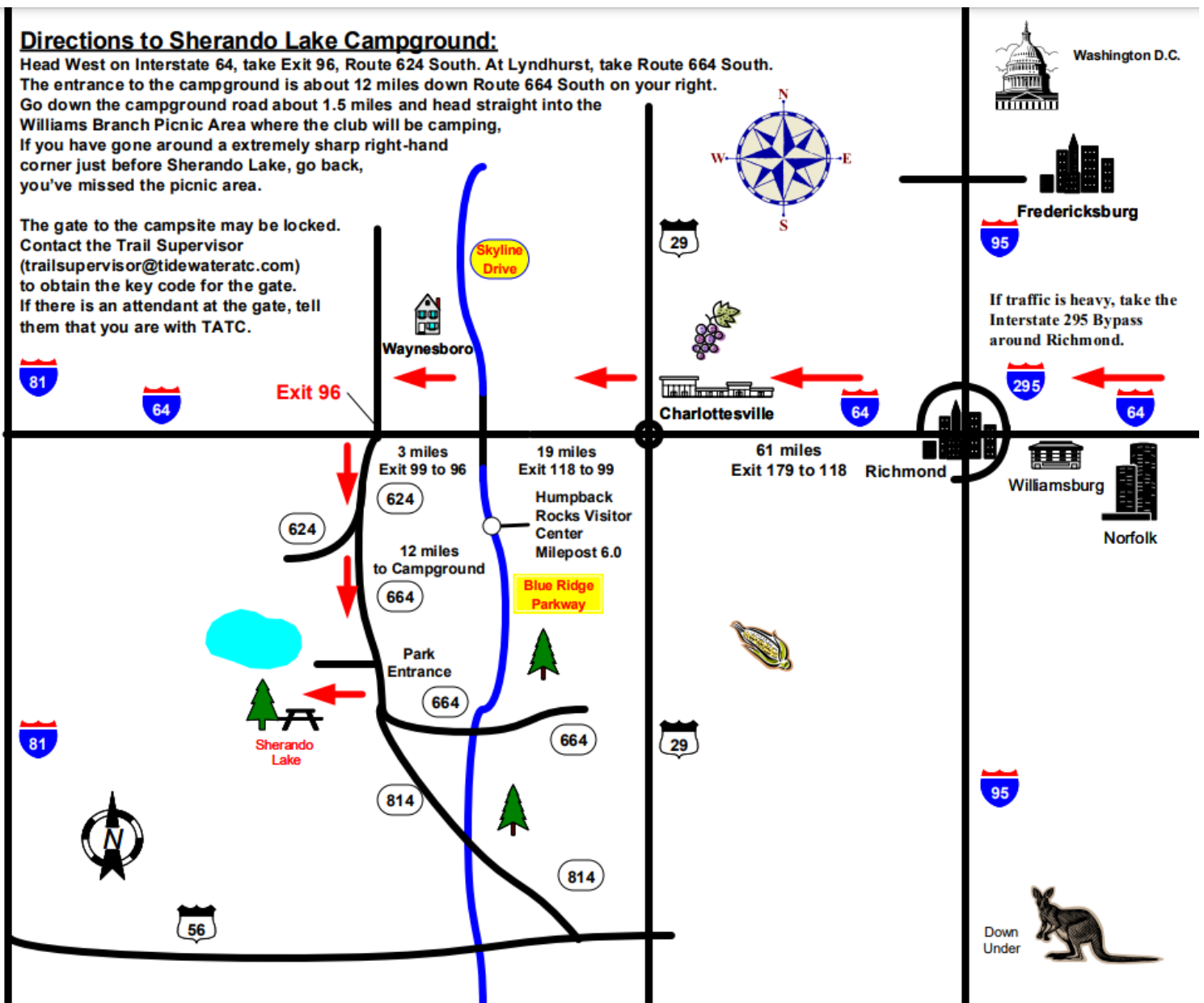
TATC Trail Access Sites



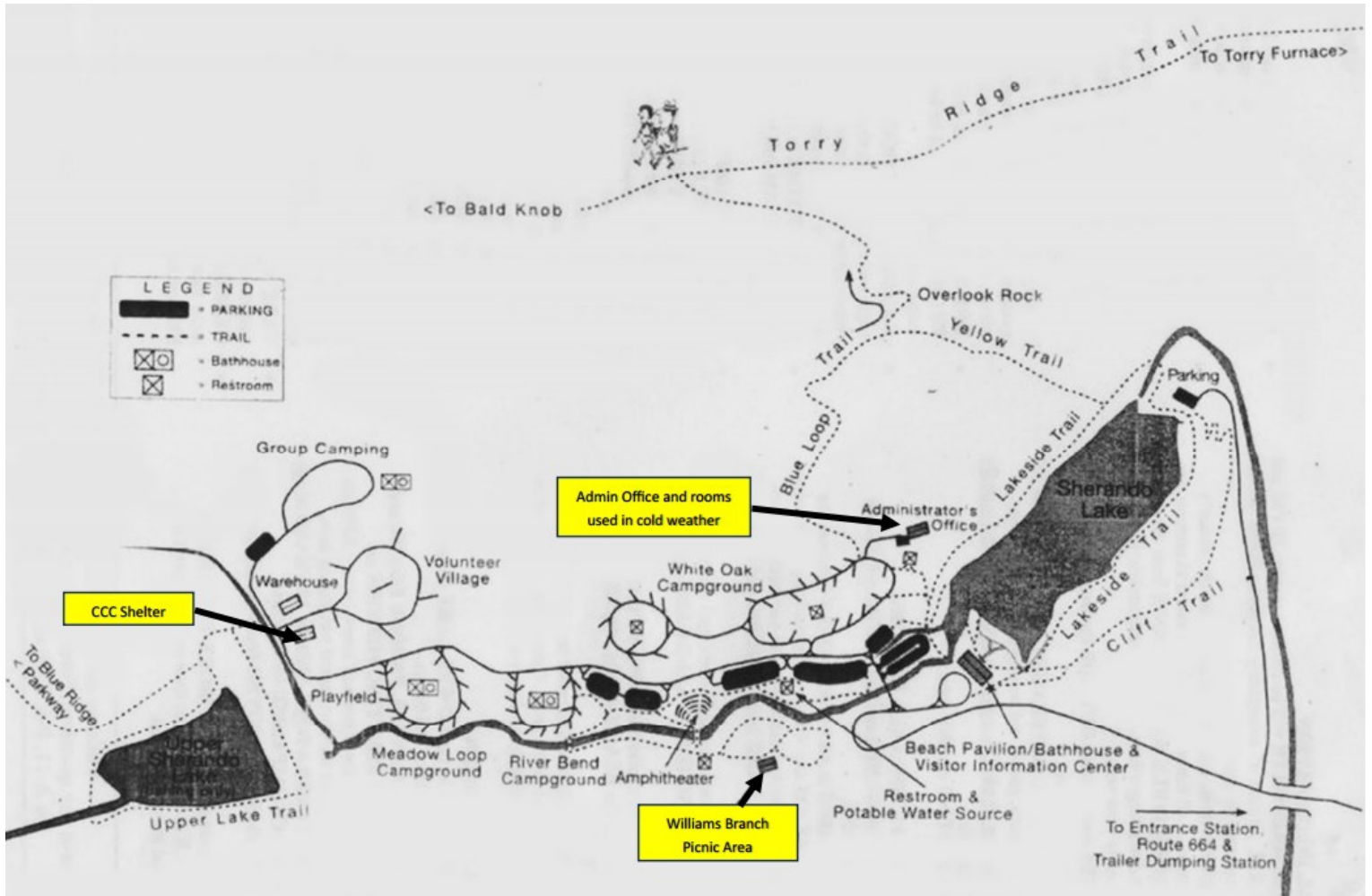
Directions to Sherando Lake Campground:

Head West on Interstate 64, take Exit 96, Route 624 South. At Lyndhurst, take Route 664 South. The entrance to the campground is about 12 miles down Route 664 South on your right. Go down the campground road about 1.5 miles and head straight into the Williams Branch Picnic Area where the club will be camping. If you have gone around an extremely sharp right-hand corner just before Sherando Lake, go back, you've missed the picnic area.

The gate to the campsite may be locked. Contact the Trail Supervisor (trailsupervisor@tidewateratc.com) to obtain the key code for the gate. If there is an attendant at the gate, tell them that you are with TATC.



Sherando Lake Recreation Area Map



Maupin Field Area

